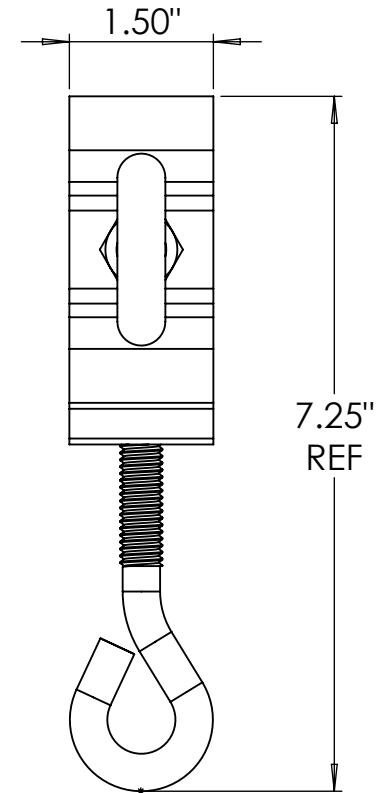
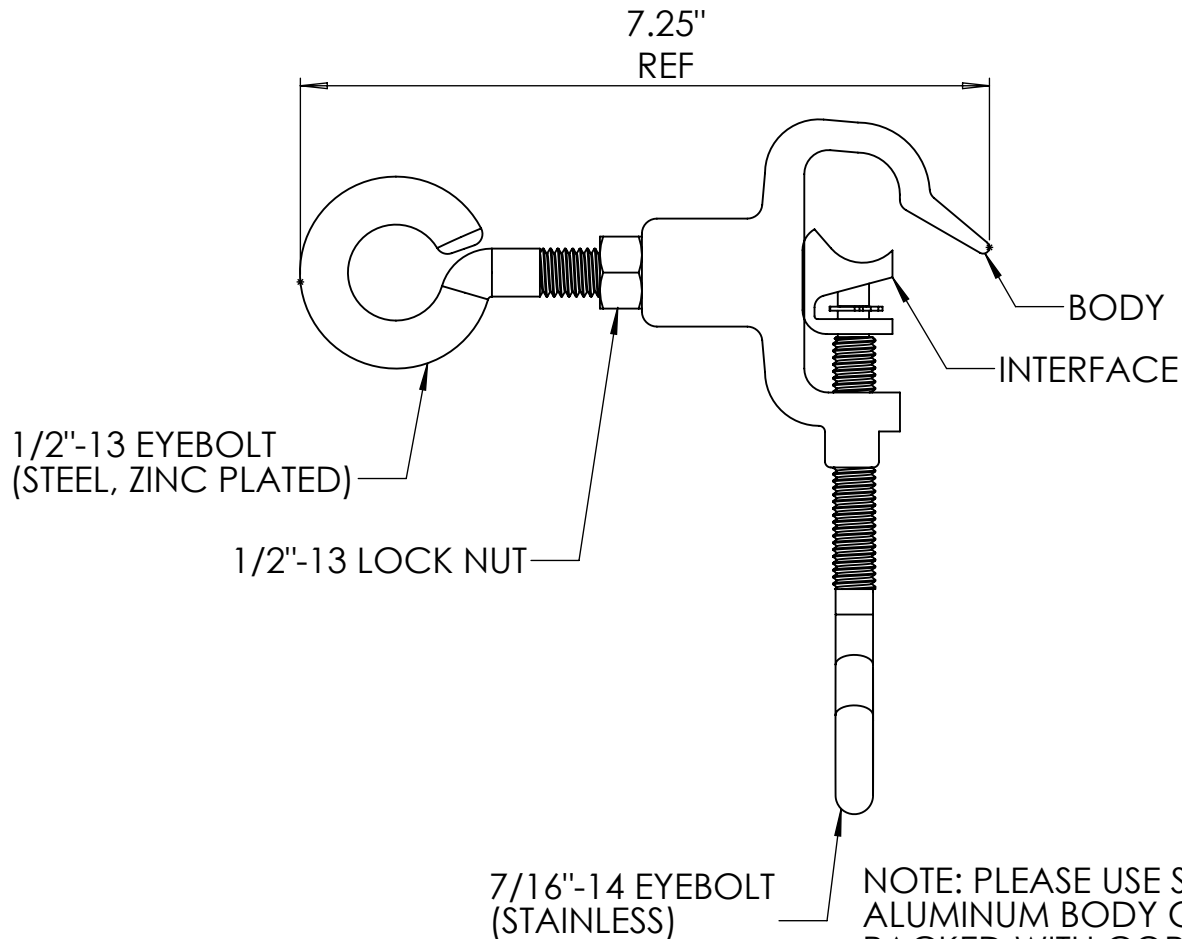


CUSTOMER APPROVAL

| MAIN CONDUCTOR | | WIRE SIZE RANGE | | TAP CONDUCTOR | |
|-----------------|---------------|-----------------|---------------|---------------|------------|
| DESCRIPTION | DIA. RANGE | DESCRIPTION | DIA. RANGE | DESCRIPTION | DIA. RANGE |
| 2/0 - 556.5 AAC | .414" - .856" | #8 - 2/0 | .128" - .447" | | |



REVIEWED AND
(PLEASE CIRCLE CHOICE BELOW)

APPROVED

APPROVED AS NOTED

CORRECT & RESUBMIT

NOT APPROVED

BY: _____ (Signature)

_____ (Print Name)

OF: _____ (Company)

ON: _____ (Date)

7/16"-14 EYEBOLT
(STAINLESS)

NOTE: PLEASE USE SUFFIX -T WHEN ORDERING FOR
ALUMINUM BODY CLAMP TIN-PLATED AND
PACKED WITH CORROSION INHIBITOR COMPOUND
FOR USE ON COPPER CONDUCTORS

UNLESS OTHERWISE SPECIFIED:

DIMENSIONS ARE IN INCHES
TOLERANCES:

.0 = $\pm .032$

.00 = $\pm .015$

.000 = $\pm .005$

UNLESS OTHERWISE NOTED
ANGULAR: $\pm .5$ DEGREES
STANDARD COMMERCIAL
TOLERANCES APPLY

INTERPRET GEOMETRIC
TOLERANCING PER:

MATERIAL

ALUMINUM

FINISH

PLAIN

DO NOT SCALE DRAWING

NAME

JG

DATE

07/24/14

DRAWN

CHECKED

ENG APPR.

MFG APPR.

Q.A.

COMMENTS:



CONNECTOR PRODUCTS INC.

TITLE:

HTC 200
EYEBOLT
TAP

SIZE
A

DWG. NO.

HTC200E

REV

-

SCALE: 1:2

WEIGHT: ~.6 LBS

SHEET 1 OF 1

PROPRIETARY AND CONFIDENTIAL

THE INFORMATION CONTAINED IN THIS
DRAWING IS THE SOLE PROPERTY OF
CONNECTOR PRODUCTS INC. ANY
REPRODUCTION IN PART OR AS A WHOLE
WITHOUT THE WRITTEN PERMISSION OF
CONNECTOR PRODUCTS INC. IS
PROHIBITED.